

ELECTRICIANS !! :
 Always contact Engineering, Dispatch or the District Manager before building your service entrance. They will tell you specifications for length of your conduit. Also, leave 36 inches of wire hanging out of the weatherhead.

30 ft pole = 15 ft conduit = 3, 2-hole conduit straps
 35 ft pole = 20 ft conduit = 4, 2-hole conduit straps

Note: 1. Customer facilities shall comply with National Electrical Code and authorities having jurisdiction.

Note: 2. Meter Loop shall be completely assembled.

Volt Reading

A - B 480 Volt
 A - N 240 Volt
 B - N 240 Volt

OPTION 1

Ground Lug
 Ground Bar
 * See Note
 Pole ground wire shall be #6 copper and 18" long.
 Bushings & Locknuts
 5th Leg at 6 O'Clock
 Must be Metal Nipple 6 inches long

Mark Neutral with white tape

Bypass Handle

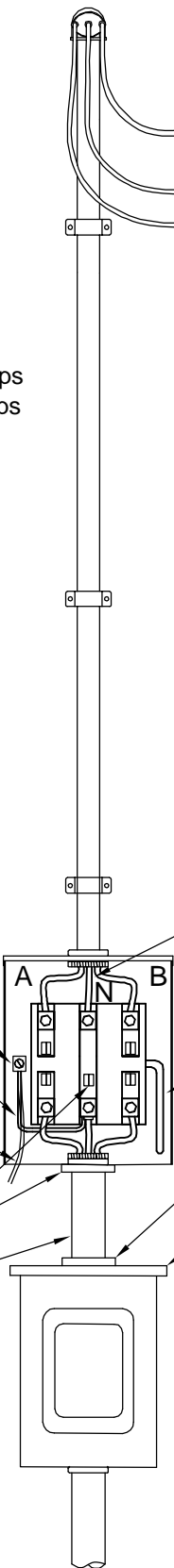
2 inch hub

200 Amp rain-tight fusable or breaker type disconnect.

CECC Stops at Wire Connections Before Weatherhead

Mark Neutral with white tape.

Conduit must be 2 inch schedule 80 Electrical Gray PVC, I.M.C. or rigid. Your weatherhead shall be of the same material as conduit. Example: if you use plastic conduit, you must use plastic weatherhead.



* Insure that ground bar is clamped under 5th leg.

EXPECTED LOAD	CONDUIT SIZE	ALUMINUM (INSULATION PER NEC)	COPPER (INSULATION PER NEC)	NEUTRAL WIRE SIZE	GROUND WIRE SIZE
200 Amp	2"	4/0	2/0	same as phase	#6 Cu

NEC = National Electric Code
 Current Code Requirement

CRAIGHEAD ELECTRIC COOPERATIVE

**5 TERMINAL 240/480 V
 SINGLE PHASE METER LOOP**

APPROVED BY: KB

DATE: 3-24-11

CHECKED BY: CH

SCALE: none

DRAWN BY: mbarnes



DWG NO.: 1106