



Craighead Electric  
Cooperative Corporation

Your Touchstone Energy® Cooperative 



We're here for you.

# HOT LINES

March // April 2016



**Craighead Electric  
Cooperative Corporation**

Your Touchstone Energy® Cooperative 

**870-794-5012**

[www.craigheadelectric.coop](http://www.craigheadelectric.coop)

**ENERGY EFFICIENT HOME**

Craighead Electric will be hosting an Open House for the all new Craighead Electric Energy Efficient Model Home!!!

**Date:** Saturday, April 16<sup>th</sup> 2016

**Time:** 10:00AM to 4:00PM

**Location:** 103 Craighead 794 Rd, Jonesboro, AR 72401

**Directions:** 6 miles north of Jonesboro on Hwy 351 from Hwy 49, Terra Hills Subdivision



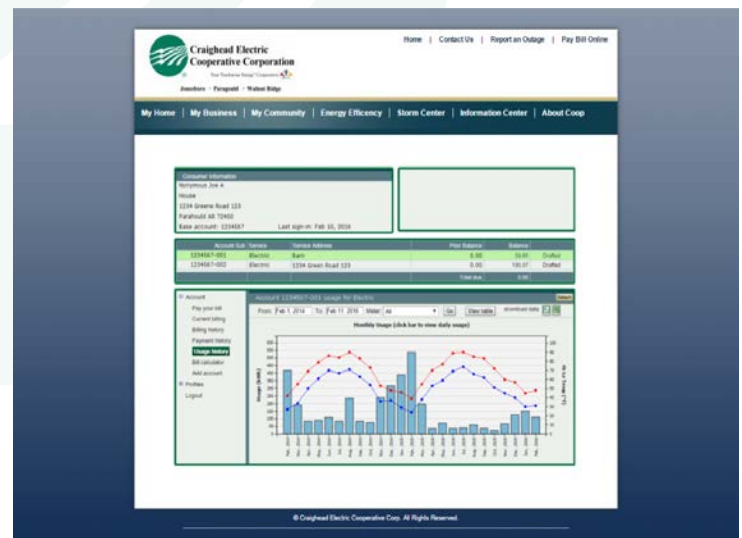
Join us and learn ways to make your new or existing home more energy efficient!

For more information and to follow the progress of the home, visit our website, [www.craigheadelectric.coop](http://www.craigheadelectric.coop) or contact the office at 870-932-8301.

## AccessMyUtility

You can pay your electricity bill Online with Craighead Electric's **AccessMyUtility** bill payment system. Visit [craigheadelectric.coop](http://craigheadelectric.coop) and click on the "Pay Bill Online" button to see your latest usage, meter readings, and due dates all in one convenient place.

Setting up an account is quick and easy. You must have your account number, driver's license/social security number, and an email address to complete the sign-up process. You will then be given the opportunity to activate emailed bill alerts. Once you are set-up, you can access your information from anywhere at any time, giving you the power to become more energy-aware, use less energy, and save money!





## Lineman Scholarship

Attention prospective lineman! Each Spring, Craighead Electric awards one full academic scholarship to attend Arkansas State University Newport's High Voltage Lineman Program. The scholarship covers full tuition and books for all 42 credit hours of the course, valued at over \$5000.



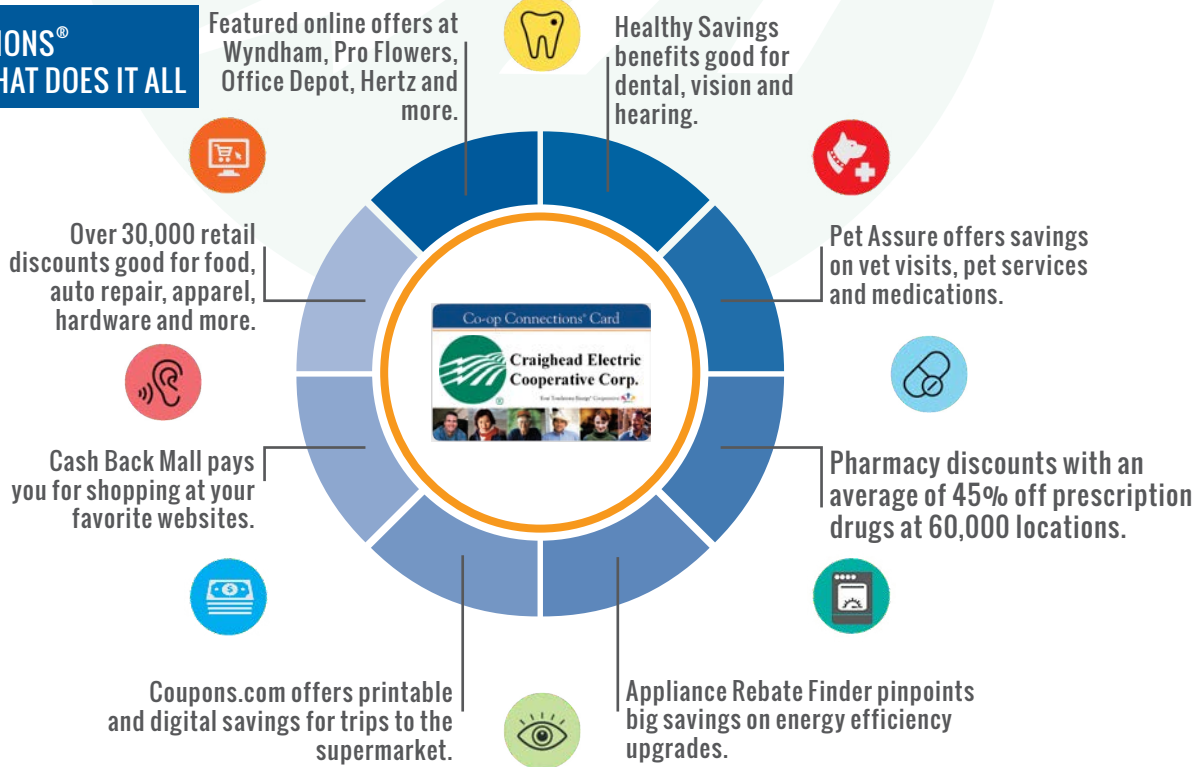
Applications will become available starting March 1st at [craigheadelectric.coop](http://craigheadelectric.coop). Download the application and return it along with a copy of your transcript and two (2) letters of recommendation to any of Craighead Electric's offices. Deadline for the application is May 1, 2016. For more information about the program, you may call ASU-Newport at 1-800-976-1676 or visit their website at [asun.edu](http://asun.edu). For further questions about the scholarship, please call Craighead Electric at 870-932-8301.

## Good Friday Closure

Craighead Electric offices will be closed Friday, March 25<sup>th</sup> in observance of Good Friday. If you need to make a payment please use our online payment option or you can drop your payment off at any of our three offices in the night drop box. If you need to report an Outage during this time, please call our outage number at 1-888-771-7772.



### CO-OP CONNECTIONS® THE ONE CARD THAT DOES IT ALL



[www.connections.coop](http://www.connections.coop)